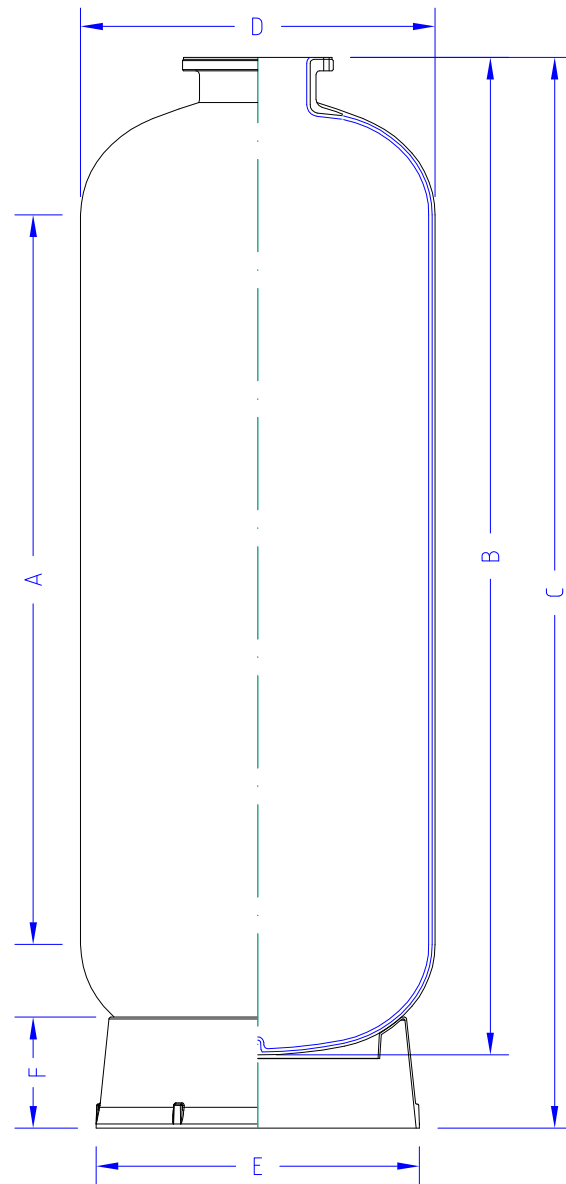
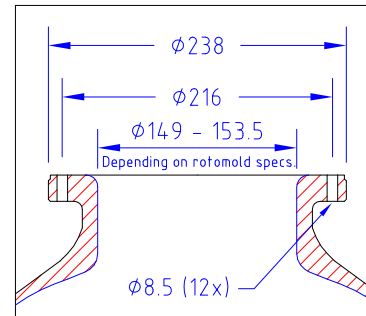


COMPOSITE INDUSTRIAL FLANGED VESSELS

6" TOP ONLY

DETAIL 6" FLANGE



Operating pressure : min 0 bar - max 10 bar
Operating temperature : min 1°C - max 65°C

A	B	C	D	E	F	/	/	/	/	/	BASE	TYPE
Cylindrical height (mm)	Height vessel (mm)	Total height (mm) Minimum - maximum	External diameter (mm)	Outside diameter base (mm)	Height base (mm)	Volume vessel (liter)	Volume dome (liter)	Weight empty vessel (kg)	Maximum base load (kg)	Lifting lugs		
838	1143	1187 ± 10	φ369	φ330	80	98	7.3	16	410	0	B-SMC-S16	C-1445-A3
1356	1661	1705 ± 10	φ369	φ330	80	138	7.3	22	410	0	B-SMC-S16	C-1468-A3
1338	1676	1717 ± 10	φ406	φ330	80	170	10.1	24.6	410	0	B-SMC-S16	C-1668-A3
1360	1719	1820 ± 15	φ469	φ516	174	248	14.6	34	690	0	B-SMC-S21	C-1868-A3
1150	1566	1679 ± 10	φ552	φ510	170	308	24	34.6	690	0	B-SMC-L21	C-2166-A3
1323	1797	1915 ± 10	φ610	φ516	174	450	35	42	990	0	B-SMC-L24	C-2475-A3
1305	1869	2085 ± 15	φ770	φ768	334	712	67	81.2	1590	0	B-SMC-X30	C-3078-A3
1242	1892	2151 ± 15	φ927	φ768	334	1020	116	104	2240	0	B-SMC-X36	C-3678-A3
1141	1918	2047 ± 20	φ1074	φ890	206	1345	176	168.5	2990	0	B-SMC-L42	C-4278-A3
1138	1972	2127 ± 15	φ1226	φ1095	276	1830	273	194	4040	0	B-SMC-L48	C-4882-A3

(e)

(d) (e)

(e)

(e)

e	Adjust dims. A,C + added base & lifting lugs (ECN160003)	BV	16/02/2016
d	Adjust dims. B and C and volume according to ECN05083,068,085,086,087	LVdS	09/01/2006
c	Adjust dims. 1200 into 1162, 1878 into 1930 and 1998-2038 into 2050-2090	LVdS	14/03/02
Revision	Revision description	Drawn	Date



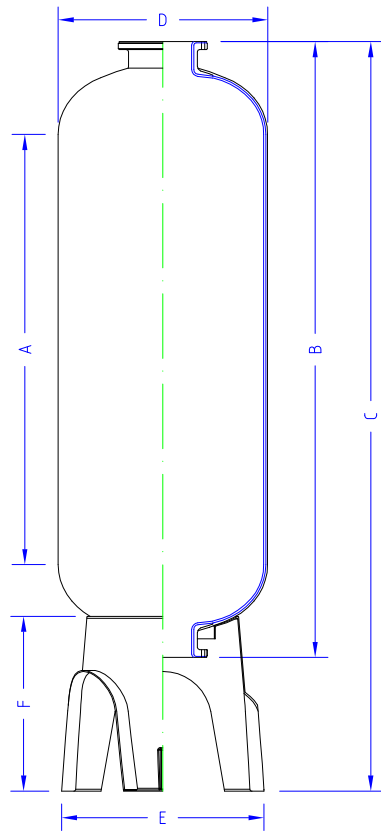
Industriepark Wolfstee
Toekomstlaan 30
HERENTALS BELGIUM

Article :	Scale :	none
Cad filename : CD-TP-I-220	Date :	2 April 1997
Model filename :	Drawn :	Ludo Van den Schoor
Remarks : Boxed dims. are critical for Q.A.	Approved :	P.K.
Material :	Projection :	A 3

Description :	INDUSTRIAL TOP FL. COMPOSITE VESSEL	Drawing number :	CD-TP-I-220e
---------------	-------------------------------------	------------------	--------------

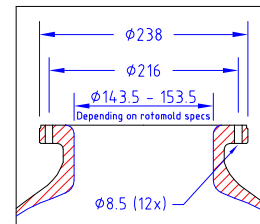
COMPOSITE INDUSTRIAL FLANGED VESSELS

6" TOP - 6" BOTTOM

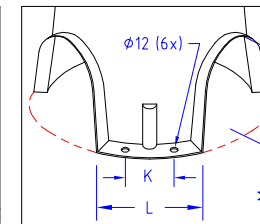


Operating pressure : min 0 bar - max 10 bar
Operating temperature min 1°C - max 65°C

DETAIL 6" FLANGE



DETAIL BASE



STANDARD

A	B	C	D	E	F	/	/	/	/	/	K	L	M	N	BASE	TYPE
Cylindrical height (mm)	Height vessel (mm)	Total height (mm) Minimum - maximum	External diameter (mm)	Outside diameter base (mm)	Height base (mm)	Volume vessel (liter)	Volume dome (liter)	Weight empty vessel (kg)	Maximum base load (kg)	Base distance (mm)	Width base (leg) (mm)	Free height base (mm)	Lifting lugs			
1369	1736	2072 ± 10	φ369	φ497	469	140	7.3	27	405	110	184	292	0	B-SMC-F16	C-1468-F7	
1356	1748	2085 ± 10	φ406	φ497	469	172	10.1	30	405	110	184	292	0	B-SMC-F16	C-1668-F7	
1345	1780	2129 ± 15	φ469	φ545	465	250	14.6	36	710	110	245	292	0	B-SMC-F21	C-1868-F7	
1158	1642	1995 ± 10	φ552	φ545	465	310	24	43	710	110	245	292	0	B-SMC-F21	C-2166-F7	
1320	1866	2224 ± 10	φ610	φ698	476	450	35	47	995	110	223	297	0	B-SMC-F24	C-2475-F7	
1284	1924	2284 ± 15	φ770	φ777	517	712	67	85	1590	110	240	317.5	0	B-SMC-F30	C-3078-F7	
1250	1975	2345 ± 20	φ927	φ952	553	1020	116	101	2245	110	265	368	0	B-SMC-F36	C-3678-F7	
1130	1980	2419 ± 20	φ1074	φ1092	589	1345	176	133	2990	110	278	387	0	B-SMC-F42	C-4278-F7	
1125	2033	2441 ± 15	φ1226	φ1270	598	1830	273	178	4040	110	316	387	0	B-SMC-F48	C-4882-F7	
1087	2122	2740 ± 20	φ1429	φ1570	845	2619	4.66	284	13600	350	820	537	0	B-SM1-600C	C-55104-F7	
1481	2516	3134 ± 20	φ1429	φ1570	845	3220	4.66	348	13600	350	820	537	3X	B-SM1-600C	C-55120-F7	
1731	2766	3384 ± 20	φ1429	φ1570	845	3602	4.66	375	13600	350	820	537	3X	B-SM1-600C	C-55130-F7	
1981	3016	3634 ± 20	φ1429	φ1570	845	3984	4.66	401	13600	350	820	537	3X	B-SM1-600C	C-55140-F7	
583	1705	2355 ± 20	φ1629	φ1570	845	2426	638	207	13600	350	820	537	3X	B-SM1-600C	C-6367-F7	
978	2100	2746 ± 20	φ1629	φ1570	845	3137	638	258	13600	350	820	537	3X	B-SM1-600C	C-6386-F7	
1501	2623	3269 ± 20	φ1623	φ1570	845	4265	638	364	13600	350	820	537	3X	B-SM1-600C	C-63103-F7	
1751	2873	3519 ± 20	φ1623	φ1570	845	4760	638	394	13600	350	820	537	3X	B-SM1-600C	C-63113-F7	
2001	3123	3769 ± 20	φ1623	φ1570	845	5255	638	423	13600	350	820	537	3X	B-SM1-600C	C-63123-F7	



(i)

(g) (i)

(h) (i) (i)

(i)

(i)

i	Adjust dim. A,C and added lifting lugs & base (ECN160003)	BV	08/02/2016
h	Adjust base dimensions according to ECN06041	LVdS	09/01/2006
Revision	Revision description	Drawn	Date
 Industriepark Wolfstee Toekomstlaan 30 HERENTALS BELGIUM		Article :	none
		Cad filename :	DG970025
		Model filename :	
		Remarks :	Boxed dims. are critical for Q.A.
		Material :	
Description :		Projection :	 A 3
INDUSTRIAL FLANGED COMPOSITE VESSEL		Drawing number :	CD-TP-I-219i